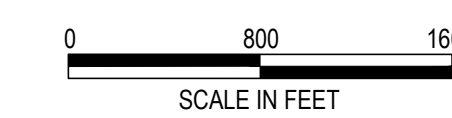


**NOTES:**

1. DATE OF IMAGERY: 2014 (GIS.NY.GOV)
2. DATE OF IMAGERY: 2015 (NEW JERSEY GEOGRAPHIC INFORMATION NETWORK WEB MAP SERVICES)
3. SOURCE OF TAX MAP DATE: NEW YORK CITY, DEPARTMENT OF CITY PLANNING



DESIGNED BY:	DRAWN BY:	CHECKED BY:	SKETCH SHOWING APPROXIMATE TAX LOT LINES OVERLAID ON DIGITAL IMAGERY			
		REVISIONS	JURISDICTION LIMIT UNION COUNTY                      HOWLAND HOOK                      NEW JERSEY RICHMOND COUNTY			
		NO.				
<b>DAVID D. RUPNARAIN</b> PROFESSIONAL LAND SURVEYOR N.J. LICENSE NO. 050295			<b>KSE</b> <i>KS ENGINEERS, P.C.</i> Engineers • Surveyors • Construction Managers 494 Broad Street, Newark, N.J. 07102 Phone: (973) 623-2999, Fax: (973) 623-2988			
					SCALE:	DATE:
			1" = 800'	03/07/16	2015-1735	INDEX





MATCHLINE - SEE SHEET S-02

MATCHLINE - SEE SHEET S-03

**NOTES:**

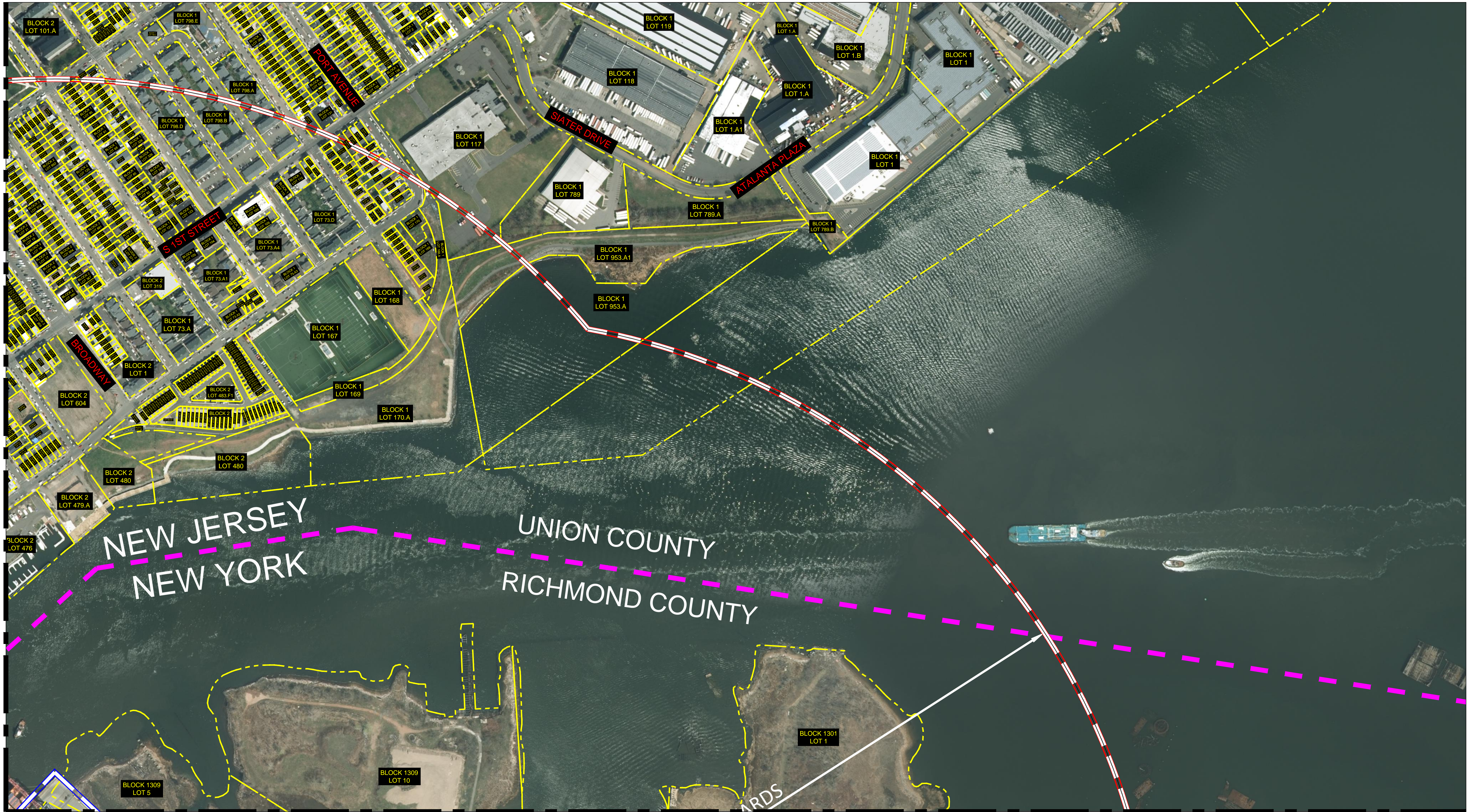
1. DATE OF IMAGERY: 2014 (GIS.NY.GOV)
2. DATE OF IMAGERY: 2015 (NEW JERSEY GEOGRAPHIC INFORMATION NETWORK WEB MAP SERVICES)
3. SOURCE OF TAX MAP DATE: NEW YORK CITY, DEPARTMENT OF CITY PLANNING



DESIGNED BY:	DRAWN BY:	CHECKED BY:	SKETCH SHOWING APPROXIMATE TAX LOT LINES OVERLAID ON DIGITAL IMAGERY
			JURISDICTION LIMIT UNION COUNTY RICHMOND COUNTY HOWLAND HOOK NEW JERSEY NEW YORK
		REVISIONS	<b>KSE</b> KS ENGINEERS, P.C. <small>Engineers • Surveyors • Construction Managers          494 Broad Street, Newark, N.J. 07102          Phone: (973) 623-2999, Fax: (973) 623-2988</small>
		No.	
DAVID D. RUPNARAIN <small>PROFESSIONAL LAND SURVEYOR          N.J. LICENSE NO. 050295</small>			SCALE: 1" = 200' DATE: 03/07/2016 PROJECT NO.: 2015-1735 SHEET NO.: 1 OF 6



MATCHLINE - SEE SHEET S-01



MATCHLINE - SEE SHEET S-04

**NOTES:**

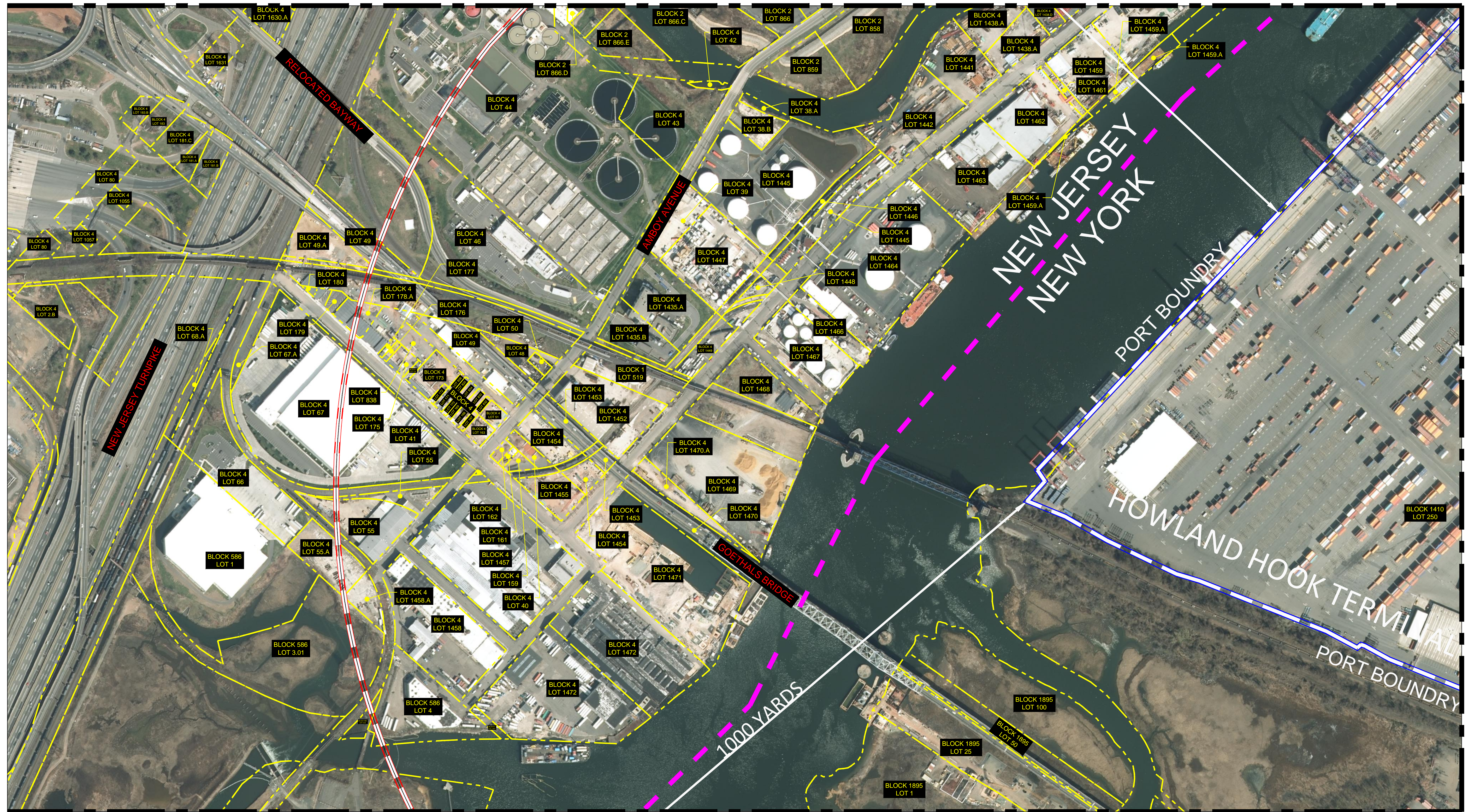
1. DATE OF IMAGERY: 2014 (GIS.NY.GOV)
2. DATE OF IMAGERY: 2015 (NEW JERSEY GEOGRAPHIC INFORMATION NETWORK WEB MAP SERVICES)
3. SOURCE OF TAX MAP DATE: NEW YORK CITY, DEPARTMENT OF CITY PLANNING



DESIGNED BY:	DRAWN BY:	CHECKED BY:	SKETCH SHOWING APPROXIMATE TAX LOT LINES OVERLAID ON DIGITAL IMAGERY
		REVISIONS	JURISDICTION LIMIT
		NO.	UNION COUNTY RICHMOND COUNTY
			HOWLAND HOOK
			NEW JERSEY NEW YORK
			<b>KSE</b>
			Engineers • Surveyors • Construction Managers 494 Broad Street, Newark, N.J. 07102 Phone: (973) 623-2999, Fax: (973) 623-2988
DAVID D. RUPNARAIN	SCALE: 1" = 200'	DATE: 03/07/2016	PROJECT NO.: 2015-1735
PROFESSIONAL LAND SURVEYOR N.J. LICENSE NO. 050295			SHEET NO.: 2 OF 6



MATCHLINE - SEE SHEET S-01

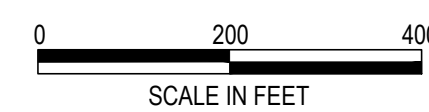


MATCHLINE - SEE SHEET S-04

MATCHLINE - SEE SHEET S-05

NOTES:

1. DATE OF IMAGERY: 2014 (GIS.NY.GOV)
2. DATE OF IMAGERY: 2015 (NEW JERSEY GEOGRAPHIC INFORMATION NETWORK WEB MAP SERVICES)
3. SOURCE OF TAX MAP DATE: NEW YORK CITY, DEPARTMENT OF CITY PLANNING

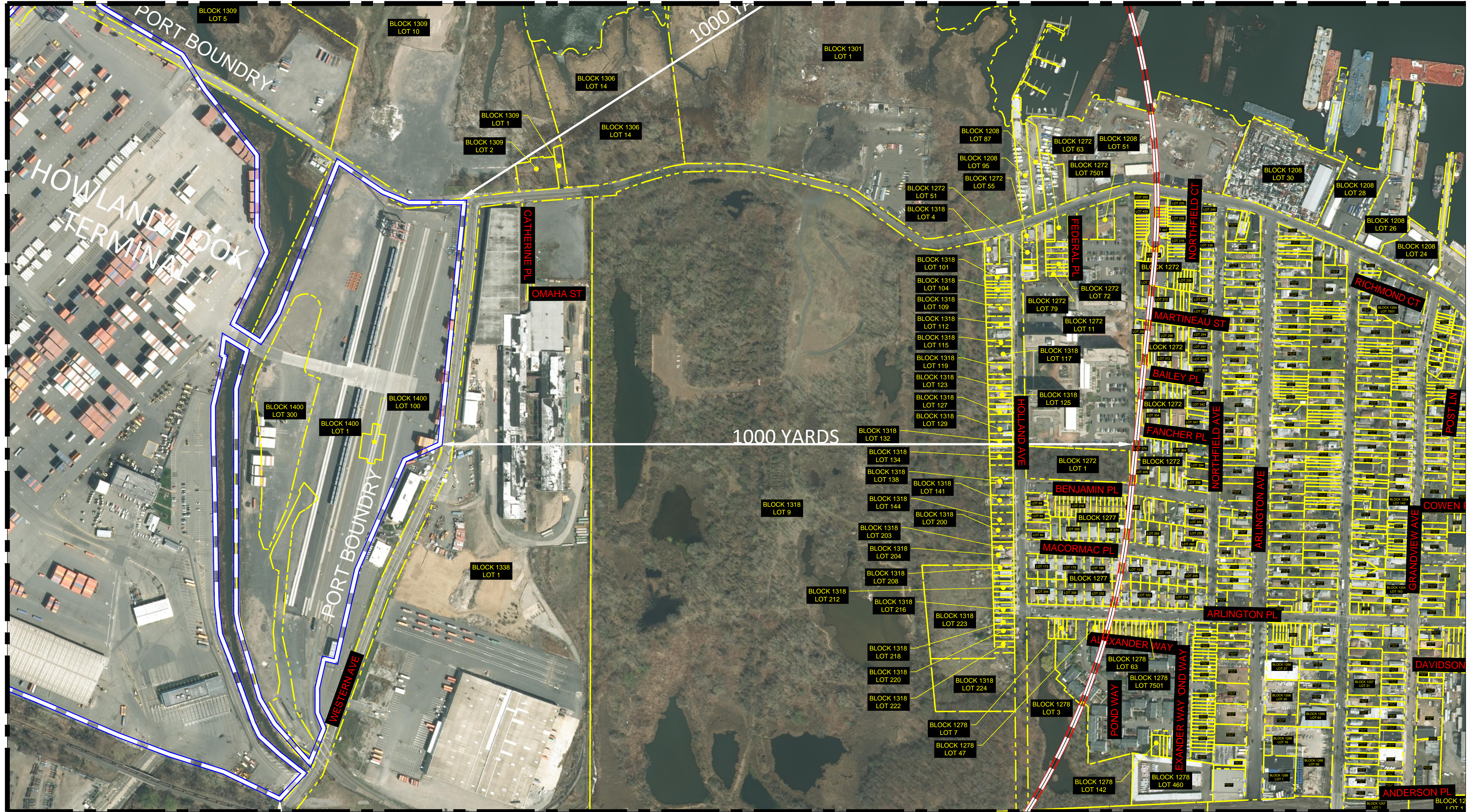


DESIGNED BY:	DRAWN BY:	CHECKED BY:	SKETCH SHOWING APPROXIMATE TAX LOT LINES OVERLAID ON DIGITAL IMAGERY
		REVISIONS	
		NO.	
			JURISDICTION LIMIT UNION COUNTY RICHMOND COUNTY NEW JERSEY NEW YORK
			<b>KSE</b> KS ENGINEERS, P.C.
			Engineers • Surveyors • Construction Managers 494 Broad Street, Newark, N.J. 07102 Phone: (973) 623-2999, Fax: (973) 623-2988
DAVID D. RUPNARAIN PROFESSIONAL LAND SURVEYOR N.J. LICENSE NO. 050295	SCALE: 1" = 200'	DATE: 03/07/2016	PROJECT NO.: 2015-1735
			SHEET NO.: 3 OF 6



MATCHLINE - SEE SHEET S-02

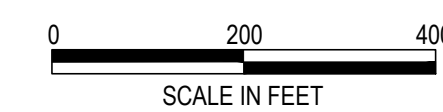
MATCHLINE - SEE SHEET S-03



MATCHLINE - SEE SHEET S-06

NOTES:

1. DATE OF IMAGERY: 2014 (GIS.NY.GOV)
2. DATE OF IMAGERY: 2015 (NEW JERSEY GEOGRAPHIC INFORMATION NETWORK WEB MAP SERVICES)
3. SOURCE OF TAX MAP DATE: NEW YORK CITY, DEPARTMENT OF CITY PLANNING



DESIGNED BY:	DRAWN BY:	CHECKED BY:	SKETCH SHOWING APPROXIMATE TAX LOT LINES OVERLAID ON DIGITAL IMAGERY
		REVISIONS	
		NO.	
UNION COUNTY RICHMOND COUNTY			JURISDICTION LIMIT HOWLAND HOOK
			NEW JERSEY NEW YORK
DAVID D. RUPNARAIN PROFESSIONAL LAND SURVEYOR N.J. LICENSE NO. 050295			<b>KSE</b> KS ENGINEERS, P.C.
			Engineers • Surveyors • Construction Managers 494 Broad Street, Newark, N.J. 07102 Phone: (973) 623-2999, Fax: (973) 623-2988
SCALE: 1" = 200'	DATE: 03/07/2016	PROJECT NO.:	2015-1735
		SHEET NO.:	4 OF 6



MATCHLINE - SEE SHEET S-03



MATCHLINE - SEE SHEET S-06

NOTES:

1. DATE OF IMAGERY: 2014 (GIS.NY.GOV)
2. DATE OF IMAGERY: 2015 (NEW JERSEY GEOGRAPHIC INFORMATION NETWORK WEB MAP SERVICES)
3. SOURCE OF TAX MAP DATE: NEW YORK CITY, DEPARTMENT OF CITY PLANNING



DESIGNED BY:	DRAWN BY:	CHECKED BY:	SKETCH SHOWING APPROXIMATE TAX LOT LINES OVERLAID ON DIGITAL IMAGERY
		REVISIONS	JURISDICTION LIMIT HOWLAND HOOK UNION COUNTY      NEW JERSEY RICHMOND COUNTY      NEW YORK
		NO.	
DAVID D. RUPNARAIN PROFESSIONAL LAND SURVEYOR N.J. LICENSE NO. 050295			KSE KS ENGINEERS, P.C. Engineers • Surveyors • Construction Managers 494 Broad Street, Newark, N.J. 07102 Phone: (973) 623-2999, Fax: (973) 623-2988
SCALE:		DATE:	PROJECT NO.:
1" = 200'		03/07/2016	2015-1735
		SHEET NO.:	5 OF 6



MATCHLINE - SEE SHEET S-04

MATCHLINE - SEE SHEET S-05



NOTES:

1. DATE OF IMAGERY: 2014 (GIS.NY.GOV)
2. DATE OF IMAGERY: 2015 (NEW JERSEY GEOGRAPHIC INFORMATION NETWORK WEB MAP SERVICES)
3. SOURCE OF TAX MAP DATE: NEW YORK CITY, DEPARTMENT OF CITY PLANNING



DESIGNED BY:	DRAWN BY:	CHECKED BY:	SKETCH SHOWING APPROXIMATE TAX LOT LINES OVERLAID ON DIGITAL IMAGERY
		REVISIONS	
		No.	
UNION COUNTY RICHMOND COUNTY			JURISDICTION LIMIT HOWLAND HOOK NEW JERSEY
<b>KSE</b> KS ENGINEERS, P.C.			Engineers • Surveyors • Construction Managers 494 Broad Street, Newark, N.J. 07102 Phone: (973) 623-2999, Fax: (973) 623-2988
DAVID D. RUPNARAIN PROFESSIONAL LAND SURVEYOR N.J. LICENSE NO. 050295	SCALE: 1" = 200'	DATE: 03/07/2016	PROJECT NO.: 2015-1735 SHEET NO.: 6 OF 6